

2023
PORTFOLIO



INFINITI

A woman with dark hair, wearing a white top, is sitting in the driver's seat of a car. She is smiling and looking down at a tablet device she is holding in her hands. The car's interior is visible, including the steering wheel and dashboard. The lighting is warm and soft, suggesting an indoor setting like a showroom. The background is slightly blurred, showing what appears to be a modern building with large windows.

LIVE EVERY LUXURIOUS MOMENT

Shining bright in the spotlight or quietly finessing an assured path, INFINITI vehicles are always designed for effortless power and serene confidence. Through refined materials inside, elegant design outside, or innovative technology throughout, the overall experience elevates your senses in a way luxury rarely does – but always should.

Whether you buy, own, or service your INFINITI, you'll leave feeling our thoughtful hospitality. This is luxury that you'll feel, live, and passionately share.

Luxury that elevates joy to new horizons.

SHAPED TO SATISFY HUMAN SENSES

DESIGN FLOWS FROM EMOTION AND INTRIGUE

Automakers build vehicles with mathematical precision. At INFINITI, our lineup is crafted to human perception. Like the shifting mood of every day, exterior styling features subtle curves and creases that reveal themselves as the lighting changes, giving subtle expression to the bold shapes and daring proportions. Enter the vehicle, and the feeling is one of an interior created with intention – to elevate the senses. The result is a design sensibility as dynamic as you.



"TSUYA" MEANS DEPTH AND DIMENSION

An aesthetic should captivate you as the details emerge over time, rather than everything revealing itself all at once. Across the INFINITI line, our colours contain multitudes, our shapes change depending on how you look at them. Such as the QX60's raised waistline, increased running clearance and a more pronounced hood paired in perfectly balanced proportions. Or the way the QX50 clamshell hood overlaps the fenders, as if the entire vehicle materialized from a unified whole. We call this "Tsuya" – creating a lasting sense of interest that never wears out its welcome.



OPTICAL, NOT NUMERICAL

Our interiors are made not to perfect the machine, but to please the driver. For example, in the area where the dashboard meets the door, the tolerance between the two panels varies to create the illusion of one line made from a single brushstroke. It's not mathematically exact, but visually precise.



FINGERTIPS DON'T LIE

The surfaces you touch were specially crafted to please your fingertips. We studied human touch for two years to find that people prefer surfaces with texture similar to the width and depth of the ridges of a fingerprint. So areas like the armrest and door panel are truly soothing.



CONTOURS OF SOUND

Beauty with purpose creates harmony. The speaker grilles on the Bose® Performance Series audio system are not only visually impressive – the pattern, size, and shape of the holes optimize the flow of sound. The result is clearer, fuller audio – and a cabin that indulges all the senses.



INGENUITY FOR A LIFE

ALWAYS IN MOTION

FORWARD-THINKING EASES THE DAY-TO-DAY

When it comes to keeping you connected, stay on top with innovation that constantly pushes the boundaries – and empowers you to go further. INFINITI InTouch™ combines leading navigation, security, entertainment and technology in a state-of-the-art dash-mounted system. To help you stay safe, enjoy even more convenience, and maintain a firm control of your journey.¹



DE-STRESS THE COMMUTE

Take the tedium out of your travels. ProPILOT Assist is engineered to automatically react to the flow of traffic by braking, coming to a complete stop, and accelerating again when the pace picks up – even helping steer around gentle curves. And the QX60's additional NaviLink is even designed to adjust its speed for turns and off-ramps based on GPS data.²



YOUR LIFE ON YOUR PLATFORM

Wireless Apple CarPlay® integration lets you bring the iPhone® experience along for the ride. Or make Android Auto™ your preferred driving companion.³ When you can choose the platform you prefer, connection fits your unique lifestyle.

ENGINEERED TO AMPLIFY EVERY MOVE

There are two ways to experience performance: with a stopwatch or with your heart rate. We believe that how the driver feels while in motion is what matters most. We design and test from that foundation, then accelerate what's possible with technology, like a fully digital handling system that helps you corner like a pro, turbochargers that spin faster for the thrill to last longer, or entire engines that change to meet your needs in the moment.



POWER NOW, EFFICIENCY NEXT

When power is what you need, the VC-Turbo™ engine changes the compression ratio to optimize output.⁴ Then for efficiency, the ratio can expand for greater mileage. Some others may claim both power and efficiency – we transform it.



THE THRILL HAS NO PLATEAU

There's a difference between speed itself and the exhilaration it brings. Our engines are tuned to maximize the driver's feeling of acceleration. By releasing torque over a broader rev range, INFINITI vehicles feel like a limitless rush. We call it Swell.

2023
QX60



A FIRST-CLASS 3-ROW SUV FOR THOSE WHO SEE BEAUTY IN LIFE'S CHAOS

Take on life in style – in a unique and striking interior featuring available deluxe front massaging seats and innovative technology that can ease every journey.

Mechanical and Performance:

- 3.5-litre V6 engine with 295 hp and up to 6,000 lbs towing capacity
- 9-speed automatic transmission and enhanced Intelligent All-Wheel Drive^{1,5}

Craftsmanship:

- Available second-row captain's chairs¹
- Available Semi-aniline Leather Seats (1st/2nd row) with quilting perforation, and contrast stitch and piping¹
- Easy one-touch third-row access
- Available Smart Rearview Mirror¹
- Available Black Open Pore Ash Wood interior trim¹

Technology:

- Wireless Apple CarPlay®, USB-based Android Auto™ and wireless charging
- Available Motion Activated Power Lift Gate for hands-free access¹
- INFINITI InTouch™ 12.3" Interactive Display with WiFi Hotspot³
- Available 10.8" Head-Up Display (HUD)¹

Safety:

- Available ProPILOT Assist^{1,2} with Navi-Link, combined with Traffic Sign Recognition to automatically slow you down
- Available Blind Spot Intervention (BSI) and lane departure prevention (LDP)^{1,16} systems
- Forward Emergency Braking with pedestrian detection (PFEB)¹²



2023
QX50



QX50 Sport trim shown.

LUXURY MADE FOR THOSE WHO DARE

Reimagining what a crossover is capable of – the QX50 is now available with a new SPORT trim with; darker touches, a sportier front fascia, and enhanced ambient interior lighting.

Mechanical and Performance:

- Available 2.0-litre VC-Turbo™ engine with 268 hp and 280 lb-ft of torque
- INFINITI Intelligent All-Wheel Drive⁵ adapts to changing road conditions

Exterior:

- Redesigned sport front fascia²⁴
- Available 20" Dark painted and machine finished wheels²⁴

Craftsmanship:

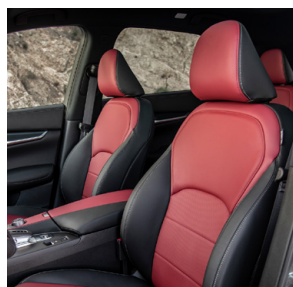
- Available Monaco Red interior^{1,24}
- Available semi-aniline leather-appointed seats

Technology:

- Bose 12-speaker Performance Series Audio¹
- Available Motion Activated Liftgate^{1,6}
- Wireless Apple CarPlay® & USB-based Android Auto™ integration
- INFINITI InTouch™ dual display with Wi-Fi Hotspot³

Safety:

- ProPILOT Assist^{1,2} that helps navigate stop-and-go highway traffic
- Rear Automatic Braking⁷ with Rear Cross Traffic Alert⁸
- Forward Emergency Braking with Pedestrian Detection¹²



2023
QX55



THE CROSSOVER COUPE FOR THOSE WHO REFUSE TO CONFORM

Make a bold statement wherever you arrive. The QX55 blurs those lines between a crossover and a coupe to help you embrace life at your pace.

Mechanical and Performance:

- 2.0-litre VC-Turbo™ engine⁴ with 268 hp and 280 lb-ft of torque
- Intelligent All-Wheel Drive^{1,5} is engineered to adapt to changing road conditions

Craftsmanship:

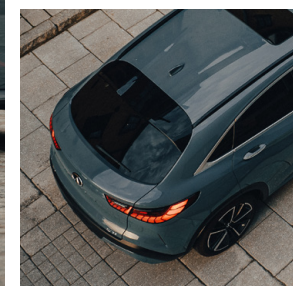
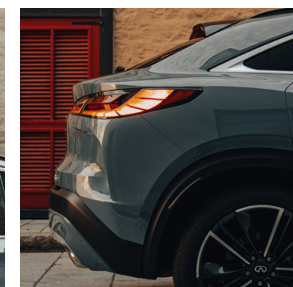
- Available Semi-aniline Leather-appointed seats¹
- Available Monaco Red interior¹
- Available Black open pore Natural Maple Wood interior trim¹

Technology:

- Wireless Apple CarPlay® & USB-based Android Auto™ integration
- Available Head-Up Display¹
- INFINITI InTouch™ dual display with Wi-Fi Hotspot³
- Available Hands-free Motion Activated Liftgate¹

Safety:

- ProPILOT Assist² that helps navigate stop-and-go highway traffic
- Blind Spot Intervention (BSI) and Lane Departure Prevention (LDP) systems^{15,16}



2023
QX80



Model may not be exactly as shown.

A FULL-SIZE SUV DESIGNED FOR THOSE WHO LIVE LIFE LARGER

A commanding presence outside and the lap of luxury inside. With power, elegance and space for up to eight, the imposing SUV embodies everything you need to do everything to the fullest.

Mechanical and Performance:

- 5.6-litre V8 engine with 400 hp and 413 lb-ft of torque
- Intelligent All-Mode 4WD¹⁸
- Up to 8,500 lbs. towing capacity¹⁹

Craftsmanship:

- Available second-row captain's chairs¹
- Semi-aniline Leather-appointed seating with quilting

Technology:

- Bose[®] Performance Series 17-speaker audio system
- Wireless Apple CarPlay[®] & USB-based Android Auto[™] integration
- INFINITI InTouch[™] with rear seat entertainment system³
- Available Smart Rearview Mirror^{1,20}

Safety:

- Available Blind Spot Intervention (BSI) and lane departure prevention (LDP)^{1,15,16} systems
- Backup Collision Intervention²¹



2023
Q50



A SPORT SEDAN INSPIRED BY MOTION – AND A LIFE THAT NEVER STOPS

You want the thrill - in life, work and on the road. Enter a V6 twin-turbocharged sport sedan driven by cutting-edge engineering.

Mechanical and Performance:

- Choose between a 3.0 litre V6 twin-turbocharged engine with 300-hp or 400-hp option^{1,5}
- Intelligent All-Wheel Drive
- 7-speed automatic transmission including manual shift mode with downshift rev matching

Craftsmanship:

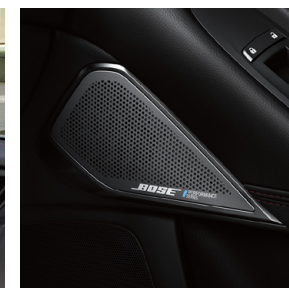
- Available Semi-aniline quilted Leather-appointed sport seats with red contrast interior stitching with driver seat power side bolsters¹
- Available black-coloured exterior trim pieces and spoiler¹

Technology:

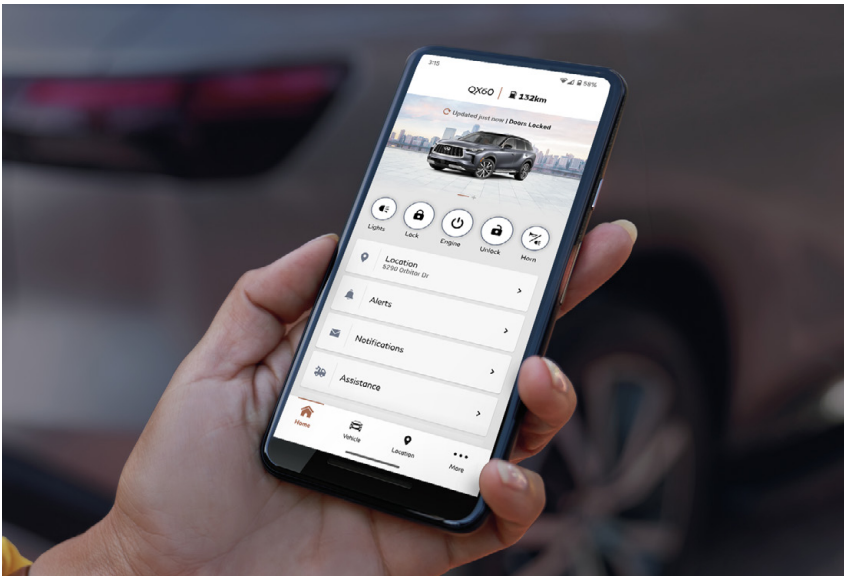
- Wireless Apple CarPlay[®] & USB-based Android Auto[™] integration
- INFINITI InTouch[™] dual display with Wi-Fi Hotspot³

Safety:

- Predictive Forward Collision Warning¹⁰ that is engineered to monitor the vehicle directly ahead of you and the one beyond it
- Available Around View Mointor (AVM) with Moving Object Detection (MOD)¹⁴ to help you park confidently¹



U.S. model shown.



MyINFINITI APP & INFINITI INTOUCH™ SERVICES

Discover a suite of connectivity features designed to make every drive better – and life that little bit more convenient. Navigation, security, keyless entry from smartphone or smartwatch, in-car Wi-Fi³, entertainment – all accessible from your innovative in-dash system.²³

MyINFINITI App

Meet the MyINFINITI app, your personal link to a host of advanced convenience and ownership features. You can start your engine, check vehicle health, book a service, and check your car's dynamic maintenance schedule – all from your smart device. Discover all it has to offer and experience luxury to the fullest.

Wireless Connectivity

Wireless Apple Carplay® is standard across all makes and models, with Android Auto™ available in all options – offering greater connectivity and in-car entertainment for every journey. Whether it's inside the agile Q50, or the formidable QX80.³

Standard Wi-Fi Hotspot³

A staple in every make and model, take advantage of greater access to the internet for all your wants and needs on the road – for driver, and passengers.



ACCESSORIES THAT ELEVATE THE EXPERIENCE

As we redefine what it means to own a luxury vehicle, we are also raising expectations of what your INFINITI can do for you, inside and out. Choose accessories that accentuate your car's beauty, illuminate the journey, secure what you'll need for your adventure, and more. Every Genuine INFINITI Accessory is created to the same exacting standards applied to the creation of your vehicle so you can assuredly transform your INFINITI for the journey ahead. And when installed at vehicle purchase by the Retailer, your accessories are covered by an extended 4-year/100,000-km warranty, for lasting confidence. To learn more, visit parts.infiniti.com.

MAINTAIN UNWAVERING ASSURANCE MILE AFTER MILE

It's our philosophy to make owning an INFINITI as empowering as it is inspirational. From the moment you arrive at an INFINITI Retailer, a carefully thought-out service and maintenance process unfolds. You experience it by receiving attention that's focused on you and your goals. You see it in the way your vehicle is serviced as we employ factory-trained technicians and use Genuine INFINITI Parts. And you appreciate it in the wealth of complimentary amenities that not only define the INFINITI Service Experience, they support you without compromise.²² We invite you to experience the following:

- Complimentary Courtesy Vehicle²²
- Complimentary Car Wash²²
- Complimentary Wi-Fi and Refreshments²²
- Luxury Lounge / Waiting Area²²
- Online Service Scheduling at service.infiniti.ca/service²²
- INFINITI Valet Service²²



COMPLIMENTARY INFINITI OIL CHANGE AND TIRE ROTATION PLAN

Keeping your INFINITI properly maintained keeps it thoroughly rewarding. The INFINITI Oil Change & Tire Rotation Plan helps maintain confidence in your drive as well as your costs. The Complimentary INFINITI Oil Change & Tire Rotation Plan gives you added peace of mind in a constantly changing world with 4 years/80,000-km of maintenance including: oil change and tire rotations. Factory-trained technicians use Genuine INFINITI Parts to help ensure the utmost care, quality and performance.



STAY CONNECTED



[facebook.com/infiniti](https://www.facebook.com/infiniti)



[instagram.com/infiniticanada](https://www.instagram.com/infiniticanada)



[infiniti.ca](https://www.infiniti.ca)



[tiktok.com/@infiniticanada](https://www.tiktok.com/@infiniticanada)

1 Available on select models. **2** ProPILOT Assist cannot prevent collisions. It is the driver's responsibility to be in control of the vehicle at all times. Always monitor traffic conditions and keep both hands on the steering wheel. System operates only when lane markings are detected. Does not function in all weather, traffic and road conditions. System has limited control capability and the driver may need to steer, brake or accelerate at any time to maintain safety. See Owner's Manual for safety information. **3** If equipped, your vehicle may include INFINITI InTouch connected features and services such as Emergency Call and Automatic Collision Notification for one year, Wi-Fi, Navigation, Bluetooth and other connected features. For complete information about your INFINITI InTouch features and services, please visit: <https://www.infiniti.ca/intouch.html> or consult your vehicle's INFINITI InTouch Owner's Manual at <https://www.infiniti.ca/owners/search-for-manuals-and-guides.html>. Compatible connected device may be required. Subject to GPS and wireless network availability and connection, and system/technology limitations. Terms and conditions of subscriber agreement apply for INFINITI InTouch Services and INFINITI InTouch with Wi-Fi. **4** VC-Turbo™ launched by INFINITI in model year 2019. **5** Intelligent All-Wheel Drive cannot prevent collisions or provide enhanced traction in all conditions. Always secure all cargo. Heavy loading of the vehicle with cargo, especially on the roof, will affect the handling and stability of the vehicle. **7** Rear Automatic Braking cannot prevent all collisions and may not provide warning or braking in all conditions. Driver should monitor traffic conditions and brake as needed to prevent collisions. See Owner's Manual for safety information. **8** Rear Cross Traffic Alert may not detect all vehicles. See Owner's Manual for safety information. **9** Never program while driving. GPS mapping may not be detailed in all areas or reflect current road status. **10** Predictive Forward Collision Warning is intended to warn you before a collision occurs; it cannot prevent a collision. Speed and other limitations apply. See Owner's Manual for details. **11** Zero Gravity seats for outboard passengers only. **12** Forward Emergency Braking with pedestrian detection cannot prevent all collisions and may not provide warning or braking in all conditions. Driver should monitor traffic conditions and brake as needed to prevent collisions. See Owner's Manual for safety information. **13** Intelligent Cruise Control uses limited braking and is not a collision avoidance or warning system. Driver should monitor traffic conditions and brake as needed to prevent collisions. See Owner's Manual for safety information. **14** Around View® Monitor with Moving Object Detection cannot eliminate blind spots and may not detect every object. Driver should always turn and check surroundings before driving. See Owner's Manual for safety information. **15** Lane Departure Warning and Lane Departure Prevention Systems operate only when the lane markings are clearly visible. Speed limitations apply. See Owner's Manual for details. **16** Blind Spot Warning and Blind Spot Intervention Systems are not substitutes for proper lane change procedures. The systems will not prevent contact with other vehicles or accidents. They may not detect every vehicle or object around you. **17** Do not perform slide forward function with the Child Restraint System occupied. **18** INFINITI All-Mode 4WD* cannot prevent collisions or provide enhanced traction in all conditions. Always monitor traffic and weather conditions. **19** 8,500 lbs. maximum towing capacity for 2021 QX80 5.6-litre V8 2WD/4WD SUV when properly equipped. Towing capacity varies by configuration. See INFINITI Towing Guide and Owner's Manual for additional information. **20** RearView Monitor and Smart Rearview Mirror may not detect every object and do not eliminate blind spots or warn of moving objects. See Owner's Manual for safety information. **21** Backup Collision Intervention will not detect every object, and speed limitations apply. Always check surroundings and turn to look behind you before moving vehicle. See Owner's Manual for details. Android and Android Auto are trademarks of Google LLC. Apple CarPlay is a registered trademark of Apple, Inc. Bose and Centerpoint are registered trademarks of Bose Corporation. iPhone is a registered trademark of Apple, Inc. All rights reserved. iPhone or other external device not included. **22** Participating retailer. Subject to availability. See retailer for details. **23** Feature availability is dependent on vehicle model, trim level, packaging and options. Trial included with vehicle purchase. Compatible connected device may be required and feature availability may be dependent on device's capability. Refer to connected device's owner's manual for details. Late availability for some features.

Always wear your seat belt, and please don't drink and drive. ©2023 INFINITI. ING-03489 Reorder #21510i (1/21, 75K, KSL)